



ANATOLIA PARK

Anatolia Park; Your new life style...

Anatolia Park has been completed to a very high standard with many interesting features and is key ready. This complex's ideal location ensures that this well appointed project is close to local amenities, public transport and a short walk to the blue flag beach. Due to its charm and location, this development will appeal to all types of buyers.

The picturesque, historic town of Side is a mere 2 km away. There is plenty to do in the town, such as visiting the stunning ruins, taking a leisurely stroll along the promenade and wandering around the old ottoman shops. As well as sightseeing and shopping there are many attractive bars and restaurants.



This architecturally designed development is very contemporary and the combination of glass and aluminium effect balconies enhance the stylish, modern design.

3 years guarantee for materials and workmanship.



5min.

Beach



10min.

Forest



45min.

Airport



5min.

Bus Station



5min.

Shopping



10min.

Restaurant



10min.

Night Life



10min.

Hospital



10min.

Ruins



10min.

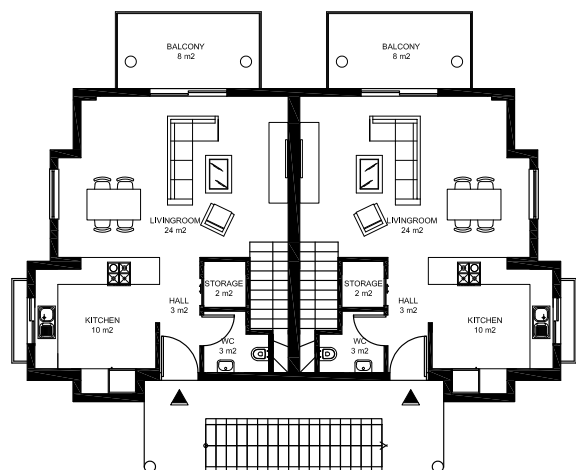
Recreation areas

The content of the project:

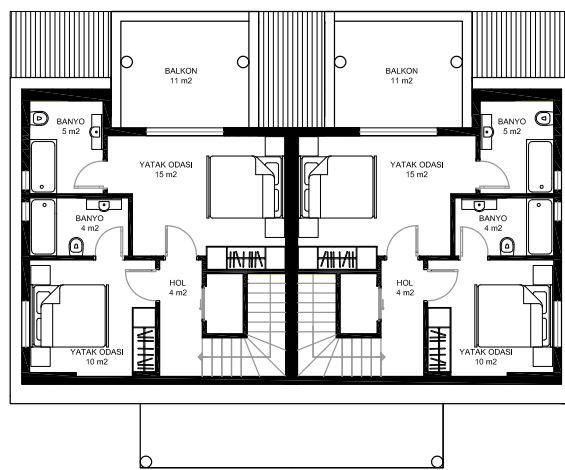
Anatolia Park comprises 3 blocks set on 1370m² land. There are 6 110m² -three bedroom- duplexes and 6 105m² -two bedroom- duplexes.

Communal areas of the project:

- Swimming pool with a jacuzzi feature,
- Separate children's pool,
- Spacious and beautiful landscaped gardens,
- Communal satellite system,
- Wi-fi internet connection,



GROUND FLOOR



FIRST FLOOR

Features of the properties:

- Unique interior design,
- Contemporary, stylish, fitted kitchen and bathroom,
- Modern steel entrance door,
- White appliances included
- Air-conditioning units included
- Travertine (marble) floors,
- 1st class quality floor and wall tiles,
- Decorative ceiling features with dimmer down lighting,
- Energy efficient water heater,
- Double glazed UPVC windows throughout with built-in fly nets and shutters,



Anatolia Park is ready so you can visit all of the apartments. You can view the show apartment with all of the features. You may choose to furnish your apartment in the same style as the show apartment or if not we can help you to choose furnishing to suit your own personal taste.

Advantages of buying a property in Side;

Anatolia Park is situated in a much sought after residential area. This development offers excellent rental potential all year round, providing an excellent return on your money. Our extensive, comprehensive After Sales department also include a rental service where we oversee everything from airport transfers to organising both short and long term leases.